

BREEDING SYSTEM STUDY IN SUN HEMP (CROTALARIA JUNCEA L.) A STEPPING STONE IN CROP IMPROVEMENT.

<https://doi.org/10.5281/zenodo.15184225>

B.B. Amanturdiev

*candidate of Agricultural sciences. Head of the Department of breeding and seed
production of medicinal plants.*

E.R. Abdimusaev

senior researcher.

*Scientific and production Center for the cultivation and processing of medicinal
plants.*

Abstract.

Sun hemp (*Crotalaria juncea* L.) belonging to the family Fabaceae is having wide range of industrial utilization as fiber crop, fodder crop and green manure. Pollination is the key mutualism between two kingdoms of organisms. The ambiguity of whether sun hemp is self-pollinated or cross-pollinated crop paved the way for our study. The simplest and most efficient approach to investigate the breeding system of *C. juncea* would be the combination of controlled hand pollination followed by pod set analysis. Floral biology study revealed the protandrous characteristics of sun hemp flowers. Flowers are zygomorphic and complete with dimorphic anthers. Breeding system study confirmed the prevalence of cross pollination in sun hemp by higher per cent pod set in cross pollination in comparison with self-pollination.

Keywords

Crotalaria juncea, pollination mechanism, cross-pollination.

INTRODUCTION. Sun hemp (*Crotalaria juncea* L.) is grown extensively for fiber, green manure and fodder purpose (Mondin et al., 2007). It belongs to the Kingdom: Plantae; Family: Fabaceae; Genus: *Crotalaria*; Species: *C. juncea* L. Sun hemp is commercially cultivated for its soft, slightly lignified stem fibers. These fibers have high cellulose, low lignin and negligible ash content (Tripathi et al., 2013), which makes it suitable for manufacturing cigarette paper, high quality tissue paper, currency paper and also for medicinal purposes (Rajesh et al., 2014, Chopra et al., 1956). It is used as fodder and culinary purpose are only to a limited extent. The nutritive value of sun hemp is found to be on par with other leguminous fodders. In addition to these industrial values, sun hemp can be grown on fallow or freshly reclaimed soils, where its major role would be renovator or soil

builder and as deterrent to nematode. Sun hemp as green manure, it adds about 50-60kg N ha⁻¹ through biomass in addition to 50-60kg N ha⁻¹ through biological nitrogen fixation by root nodules. Sun hemp has gained the status of substitute for N fertilizer application as it is capable of fixing 60-80kg of N ha⁻¹. The leguminous crop sun hemp is cultivated in many parts of the world such as India, Brazil, Pakistan, China, Korea, Bangladesh, etc., China is the highest producer of sun hemp fiber in the world. India contributes about 23% of world's production with 27% of total area under cultivation. Despite all known economic and ecological information about the sun hemp, only a little information is available about the breeding system and its pollination mechanism. Moreover, all the available information is found to be contradictory. One school of thought prescribed, sun hemp as a self-pollinated crop (Fryxell, 1957) while another school of thoughts prescribed it as a cross pollinated crop (Howard et al., 1919, Mitra, 1970, Patel and Kamat, 1950). Some others prescribed, sun hemp possess self-incompatibility and it takes the advantage of pollinators to set seeds (Kundu, 1964, Purse glove, 1972). Such a scientific dilemma not only describes the knowledge gap but, also highlighted the need of master maneuvering breeding works comprising the prospects of both plant genetic resource management and its utilization in genetic improvement of the species. Hence, the simplest and most efficient approach to investigate the breeding system of *C. juncea* would be the combination of controlled hand pollination and pod set analysis. So, the present study was carried out to understand floral biology and pollination mechanism in *C. juncea* L.

MATERIALS AND METHODS.

The current investigation was carried out at the Scientific and production Center for the cultivation and processing of medicinal plants during 2023-2024y. The experimental material comprised of five germplasm accessions collected from different parts of Tashkent region and also from RIGR (Research Institute of genetic resources). Each accession was raised in 4mx2m sized plot with 60cm spacing between rows. The above location was situated at an altitude of 27 meters above MSL, 11oN latitude and 77oE longitude. Flowers in *C. juncea* are found to be zygomorphic and complete as that of Fabaceae flowers. Flowers consist of corolla with polypetalous petals (Standard petal, Wing petals and Keel petals), androecium with dimorphic anthers and gynoecium with hairy stigma (Fig. 1). For the oral biological study, four growth stages of flowers were identified (Fig. 2) viz., stage 1 (S1- unopened bud), stage 2 (S2- petals start to break out of the calyx), stage 3 (S3- petals expanded) and stage 4 (S4- open flowers) as described by Chandrashekar et al. (2013). Observations were taken from 20 randomly selected plants per plot. The relative growth of floral parts and time of anther dehiscence were recorded on ten

random flower buds at different stages. To determine stigma receptivity in relation to pollen viability ten flowers bagged at each flowering stages (S1, S2, S3 and S4) were randomly collected during 6:00–18:00 hours. Stigma receptivity was investigated by immersing stigmas in 3% hydrogen peroxide solution, stigmas that produced the bubbles within 2–3 minutes were considered receptive (Zeisler, 1938). Pollen viability was tested by following acetocarmine staining method (Dafni et al., 2005) and in vitro pollen germination method using 10 % sucrose + 100 ppm boric acid solution with aniline blue dye (Rathod et al., 2018). The samples were viewed under a fluorescent microscope (Nikon Eclipse Ni-U, Japan) using Nikon filter (330–380nm excitation filter, 410nm barrier filter). Images were recorded with the help of a Nikon DS Fi3 camera using NIS-Elements F v.4.60.00 image processing platform. To ensure the comparative fitness of dimorphic anthers in effecting fertilization, 20 randomly selected flower buds were emasculated and hand pollinated with pollen from both types of anthers, separately. The number of pods with seed set were recorded upon maturity. To study the breeding system, flower buds from more than 200 individual plants of *C. juncea* was randomly selected and tagged. Plants were evenly and randomly subjected to different pollination treatments as follows; (I) selfing (hand pollination with pollen of the same flower), (II) cross pollination (pollen from flowers of different accessions) and (III) control (flower buds were covered and allowed natural selfing if any to take place). Upon pollination treatments, each flower bud was immediately covered with a butter paper bag. Mature pods were harvested and per cent pod set was calculated. To examine statistical differences in pod setting between hand self-pollination and hand cross-pollination t-test was performed using SPSS software version 16.0 (Released, 2007). The experiment was repeated in the next crop season to identify seasonal variations, if any. Index of self-incompatibility (ISI) is used to assess the breeding behavior of hermaphrodite plants. ISI is a ratio between the percentage of pod set from hand self-pollination to hand cross-pollination and calculated for all the cultivars. Species with ISI value < 0.25 are considered self-incompatible and those with value > 0.25 as self-compatible (Barwa, 1974, Bullock, 1985, Nayak and Davidar, 2010).

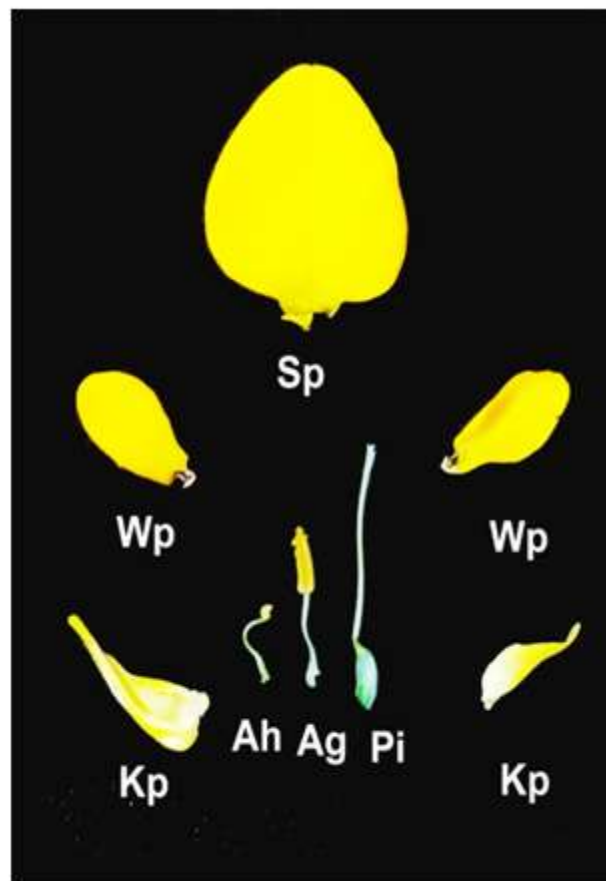


Fig. 1. Sunnhemp (*C. juncea*) floral parts. Sp- Standard petal, Wp- Wing petal, Kp- Keel petal, Ah- Heart shaped anther, Ag- Globose anther, Pi- Pistil.

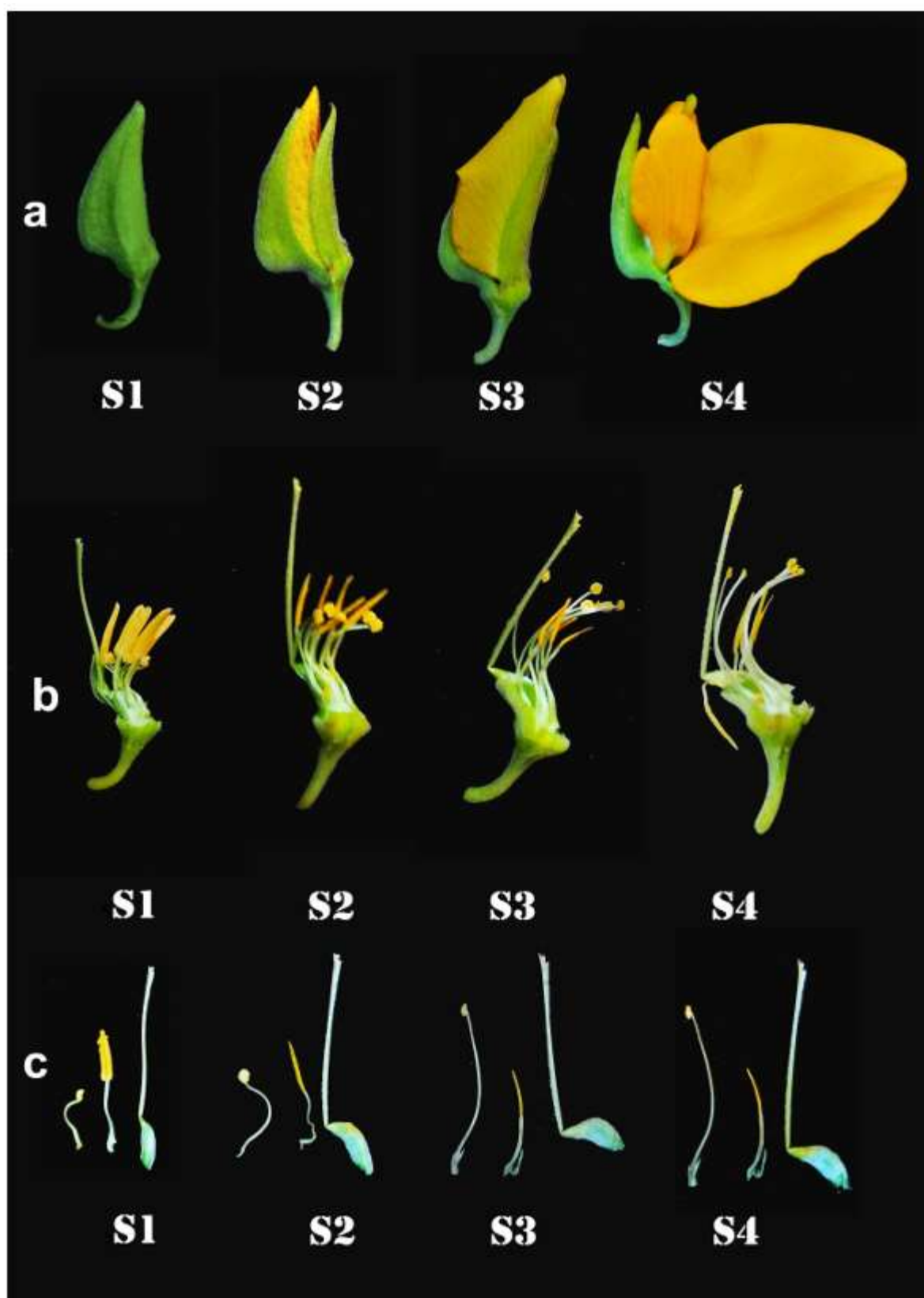


Fig. 2. Sunnhemp (*C. juncea*) flower showing four anthesis stages, a) complete flower, b) flower showing dimorphic anthers at different stages, c) Size of dimorphic anthers in relation to pistil at different stages. S1 unopened bud, S2 - petals start to break out of the calyx, S3 - petals expanded and S4 - open flowers.

RESULTS AND DISCUSSION. Flowers in *C. juncea* are found to be zygomorphic and complete as that of Fabaceae flowers. Of the four floral components, the calyx exhibited only minor changes across the anthesis stages, while standard petal showed rapid expansion from stage 1 (16.3mm) to stage 4 (18.9mm) (Table 1). The species is characterized with anther dimorphism condition, where it exhibited dimorphism in shape and size as one having bigger heart shape while the other having small globular shape (Fig. 2b). The filaments of globose anthers remained almost at the same length while the filaments of heart shaped anthers elongated from stage 2 onwards. Filaments of heart shaped anthers exhibited rapid expansion from stage 2 onwards to reach the stigma (Fig. 2c). Results established that anther filament growth of globose anthers remained stagnated throughout anthesis and released pollen from anthers at stage S2. On the other hand, filaments of heart shaped anthers started growing from stage S2 onwards and carried the pollen mass towards stigma. Filaments of heart shaped anthers reached a height of 2/3rd of stylar length by stage S3. The heart shaped anthers release pollen at this stage, enhancing probability of self-pollen landing on the stigmatic surface naturally. However, pistil length remained unchanged.

Table 1. Relative growth of floral parts across different anthesis stages in *C. Juncea*.

Stage	Calyx		Standard Petal		Style	Filament Length		Anther Length	
	Length (mm)	Width (mm)	Length (mm)	Width (mm)		Globose Anthers (mm)	Heart shaped Anthers (mm)	Globose Anthers (mm)	Heart shaped Anthers (mm)
S1	16.8	13.8	16.3	15.2	16.1	6.7	6.2	4.0	0.7
S2	17.2	14.2	17.7	15.8	16.4	7.1	8.6	4.4	0.9
S3	17.5	14.3	18.4	16.9	16.7	7.1	11.5	4.2	1.0
S4	17.8	14.5	18.9	17.6	17.0	7.2	12.2	4.2	1.0
SE ±	0.21	0.15	0.56	0.54	0.19	0.11	1.49	0.08	0.07
CV (%)	2.42	2.02	6.38	6.67	2.39	3.37	28.51	3.30	14.48

Both types of anthers were investigated for their dehiscence at 2 hours interval from 06:00–18:00 hours across the anthesis stages. The globose anthers start dehiscence at stage S2 (around 08:15 hours), remained inflated up to stage S3 and deflated at stage S4. However, heart shaped anthers began to dehiscence from stage S3 onwards (around 10:15 hours) and remained inflated up to stage S4. Despite the differential growth phenomena pollen of both globose and heart shaped anthers found insignificantly deviating for pollen fertility and viability. Acetocarmine staining results showed 90.1% and 88.6% (t-test, $p = 0.424$) of pollen fertility for globose and heart shaped anthers, respectively (Fig. 3). Results of invitro pollen viability test also witnessed that there is no significant deviation for pollen viability of both globose and heart shaped anthers (Fig. 4). A similar result was found for pollen viability, both globose and heart shaped anthers produced 81.2% and 82.4% pod (t-test, $p = 0.889$), respectively in emasculated flowers. At stage S1, pollen

exhibited viability since 09:00 hours while stigma becomes receptive during 12:00 hours onwards and maintained till stage S4 of anthesis as indicated by the presence of effervescence after immersion of stigmas of each stage in a drop of 3% hydrogen peroxide solution. Pollen viability

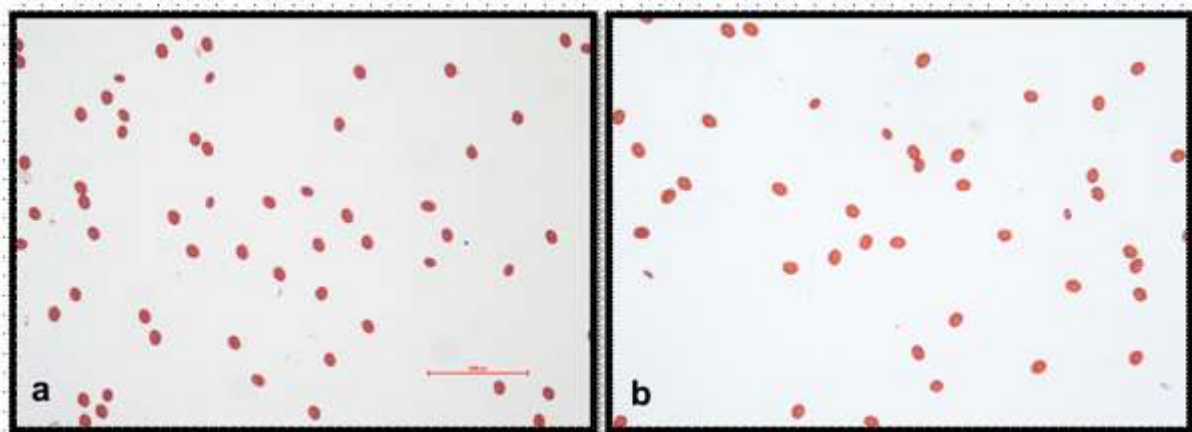


Fig. 3. Sun hemp (*C. juncea*) pollen fertility a) Pollens of globose anther b) Pollens of heart shaped anthers.

and stigma receptivity study found that *C. juncea* is a protandrous plant species. In addition, the study also revealed that both type of anthers is available and equally competitive in effecting fertilization. Hydrogen peroxide-based assay established that stigma of the flower remained receptive throughout the anthesis. Taking into account of all these outcomes, natural self-pollination in *C. juncea* appears obvious at a later stage of anthesis and the phenomenon called delayed autonomous self-pollination. Similar selfing mechanism was reported in some wild *Crotalaria* species like *C. micans* (Etcheverry et al., 2003) and *C. stipularia* (Etcheverry, 2000) that support our hypothesis. Floral biology study ruled out probability of herkogamy as a causal factor for the preferential success of cross pollination, as pollen from dimorphic anthers could reach stigma of pistils belonging to the same flower but failed to set the seed.

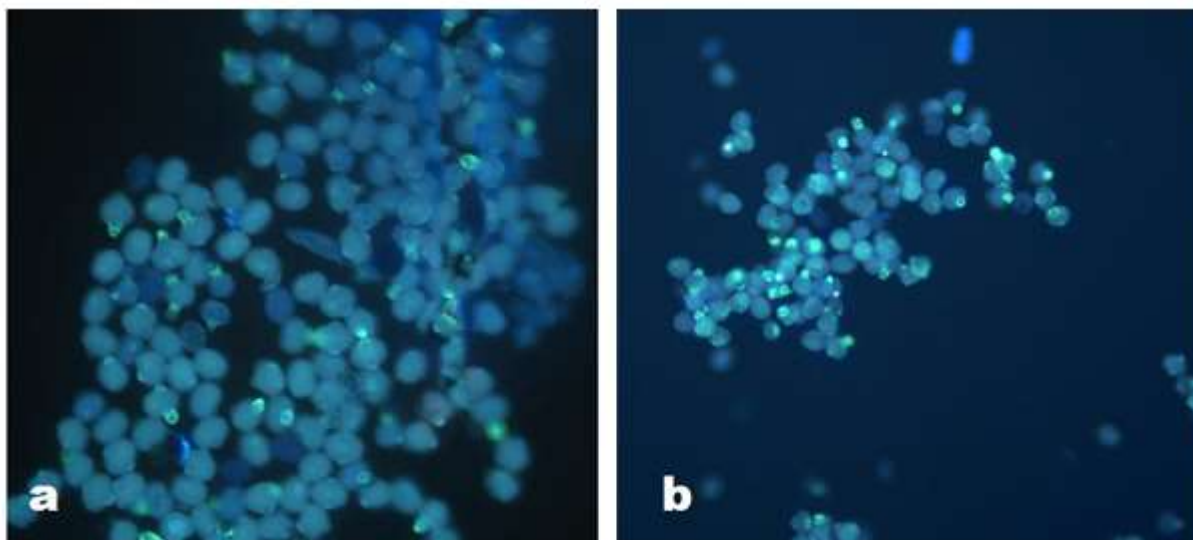


Fig. 4. Sun hemp (*C. juncea*) pollen viability a) Pollens of globose anther b) Pollens of heart shaped anthers.

There was no significant difference in per cent pod set among hand self-pollinated (2.64%) and paper bagged (control) flowers (2.75 %) (T-test, $p = 0.648$). The per cent pod set in cross pollination was found to be 53.12 %. It shows a significant difference for percent pod set in comparison with self-pollination (t-test, $p = 0.000$). In selfed pods average of 3–4 shriveled and none viable seeds were obtained per pod whereas in crossed pods, average of 10–11 bold and viable seeds were developed per pod. However, the results of the experiment indicated the prevalence of cross-pollination in *C. juncea*. (Table 2). The results of hand pollination revealed that *C. juncea* is preferably a self-incompatible species that usually reproduce through cross-pollination as there was a significant difference in pod setting between self and cross-pollinated flowers. Self-pollination yielded significantly very less pods. Index of self-incompatibility (ISI) is an indirect measure to determine the breeding behaviour of hermaphrodite plants, where lower value of ISI (< 0.25) indicate the presence of self-incompatibility (Bawa, 1974, Bianchi and Gibbs, 2000, Bullock, 1985, Nayak and Davidar, 2010). Low value (< 0.25) of ISI in the present study convincingly established the self-incompatible breeding behaviour of the species.

Table 2. Per cent pod setting from different methods of pollinations in *C. Juncea*

Treatments	TNCJ-11	TNCJ-37	TNCJ-97	SN-17	SN23	Mean \pm SE
Control	2.7	2.57	2.9	3.2	2.4	2.754 ± 0.14
Selfing	2.3	2.87	2.1	3.1	2.84	2.642 ± 0.19
Crossing	48.6	54.3	52.7	53.1	56.9	53.12 ± 1.35
ISI value	0.04	0.05	0.04	0.05	0.05	0.04

It can be elucidated that *C. juncea* is a cross pollinated crop with the presence of self-incompatibility. In order to identify the mechanism involved in recognition

of self-pollen, an elaborated histological, biochemical and transcriptional studies is needed further.

REFERENCES:

1. Bawa, K. S. 1974. Breeding Systems of Tree Species of a Lowland Tropical Community. *Evolution*, 28, 85-92. [Cross Ref]
2. Bianchi, M. B. and Gibbs, P. E. 2000. Late-acting self-incompatibility in *Capparis retusa* (Capparaceae), a species of Chaco woodland in NE Argentina. *Brazilian Journal of Botany*, 23, 395-400. [Cross Ref]
3. Bullock, S. H. 1985. Breeding systems in the flora of a tropical deciduous forest in Mexico. *Biotropica*, 287-301. [Cross Ref]
4. Chandrashekar, U., Dadlani, M., Vishwanath, K., Chakrabarty, S. and Prasad, C. M. 2013. Study of morpho physiological, phenological and reproductive behavior in protogynous lines of Indian mustard [*Brassica juncea* (L.)]. *Euphytica*, 193, 277-291. [Cross Ref]
5. Chopra, R., Nayar, S., Chopra, I., Asolkar, L. and Kakkar, K. 1956. Glossary of Indian medicinal plants, New Delhi. Council of Scientific & Industrial Research.
6. Dafni, A., Kevan, P. G. and Husband, B. C. 2005. Practical pollination biology. Etcheverry, A. 2000. Floral biology and pollination in *Crotalaria stipularia* (Fabaceae: Papilionoidea). VIII International Symposium on Pollination-Pollination: Integrator of Crops and Native Plant Systems 561. 339-342. [Cross Ref]
7. Etcheverry, A., Protomastro, J. and Westerkamp, C. 2003. Delayed autonomous self-pollination in the colonizer *Crotalaria micans* (Fabaceae: Papilionoidea): structural and functional aspects. *Plant Systematics and Evolution*, 239, 15-28. [Cross Ref]
8. Fryxell, P. A. 1957. Mode of reproduction of higher plants. *The Botanical Review*, 23, 135-233. [Cross Ref]
9. Howard, A., Howard, G. L. and Abdur, R. 1919. Studies in the pollination of Indian crops. Mem. Dep. Agric. India Bot. Ser.
10. Kundu, B. C. 1964. Sunn-hemp in India. *Proceedings. Soil and Crop Science Society of Florida*. 396-404. Mitra, G. 1970. Mode of reproduction in sun hemp (*Crotalaria juncea* L.).
11. Broteria. Mondin, M., Santos-Serejo, J. A. and Aguiar-Perecin, M. L. 2007. Karyotype characterization of *Crotalaria juncea* (L.) by chromosome banding and physical mapping of 18S-5.8 S-26S and 5S rRNA gene sites. *Genetics and Molecular Biology*, 30, 65-72. [Cross Ref]

12. Nayak, K. G. and Davidar, P. 2010. Pollination and breeding systems of woody plant species in tropical dry evergreen forests, southern India. *Flora Morphology, Distribution, Functional Ecology of Plants*, 205, 745-753. [Cross Ref]
13. Patel, M. and Kamat, M. 1950. Control of plant diseases through disease resistance in Bombay. *Poona Agricultural College Magazine*, 40, 6-11.
14. Purseglove, J. W. 1972. Tropical crops. Monocotyledons. 1 & 2.
15. Rajesh, O., Raj Kumar, V. and Shankaraiah, P. 2014. Antiobesity and Hypoglycemic Effect of Ethanolic Extract of *Cratalaria juncea* in High Fat Diet Induced Hyperlipidemic and Hyperglycemic Rats. *India International Journal of Pharmaceutical Science*, 6.
16. Rathod, V., Behera, T., Munshi, A., Durgesh, K., Jat, G., Krishnan, B. and Sharma, N. 2018. Pollen viability and in vitro pollen germination studies in *Momordica* species and their intra and interspecific hybrids. *Inter. J. Chem. Studies*, 6, 32-40.
17. Tripathi, M., Chaudhary, B., Sarkar, S., Singh, S., Bhandari, H. and Mahapatra, B. 2013. Performance of sunnhemp (*Crotalaria juncea* L.) as a summer season (pre-monsoon) crop for fibre. *Journal of Agricultural Science*, 5, 236. [Cross Ref]
18. Zeisler, M. 1938. Über die Abgrenzung der eigentlichen Narbenfläche mit Hilfe von Reaktionen. *Beihefte zum Botanisches Zentralblatt A*, 58, 308-318.